



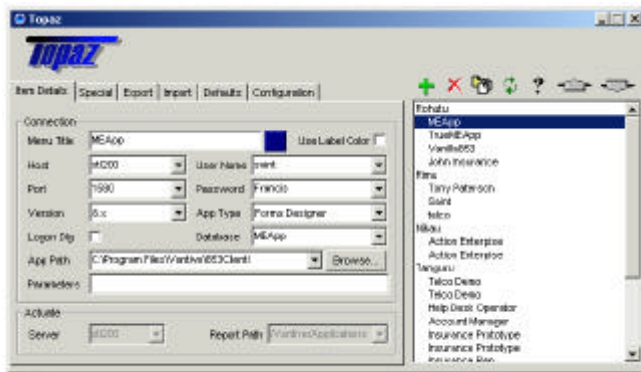
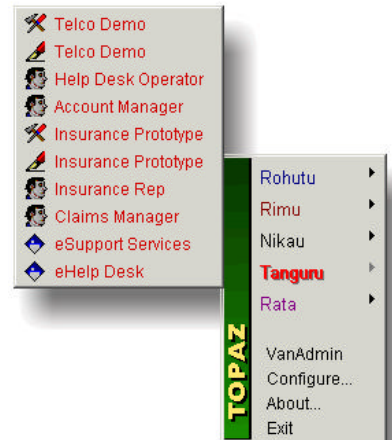
Topaz Overview

Topaz can greatly reduce difficulties associated with switching between multiple Vantive Applications. Its ability to retain and organize connection details in an easy to use popup menu, means that you can focus on the task at hand, rather than endlessly re-entering connection information – it can even be set to bypass the login screen.

Topaz can record all the standard connection details, such as host name, port, username and password. In addition other more specialized options such as: Client side debugging, Application Window size, Application Window Title and Application Locale, can be specified.

All this comes in one handy executable – no DLLs or setups to run, it even includes a comprehensive, self-extracting help file

Best of all, Topaz is **FREE**, you can distribute it anyway you want – no royalties and no shareware limitations.



Intuitive Menu

The popup menu can be either a single vertical line or a two tiered structure – cascaded. This is further enhanced by enabling color choice and different icons for each type of shortcut.

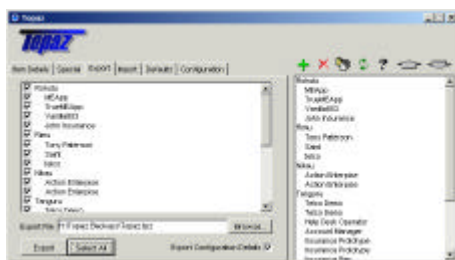
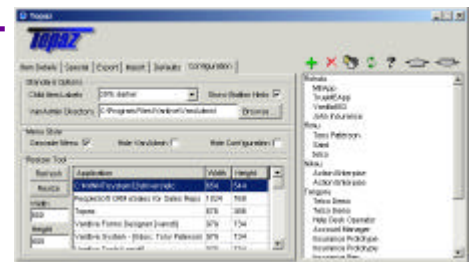


Application Connection Details

The prime purpose of Topaz is to allow the easy launching, organizing and recording of your various Vantive connection details. These naturally enough include the basic details such as Host Name, Connection Port, Database Name, Version Number, Username and Password. However in addition to these very standard details you can configure other options, which would normally only be configurable by editing the registry. These advanced options include: Actuate details, Automatic Login, Client Title, Application Window Size/Position, Application Locale and various Client side debugging options.

Menu Customization and Sizing Tool

Included among the many configuration options, is the ability to cascade the menu, hide the VanAdmin shortcut or Configuration shortcuts – very useful if Topaz is placed on a users desktop. This configuration section also includes the Resizer Tool. This embedded tool allows you to resize any visible window, such as a browser – invaluable if you are required to work to a particular screen resolution.



Exporting and Importing of Settings

The ability to save your current setting to a tab delimited file, allows the archiving and distribution of Topaz configurations amongst a team or group of users. This feature can, if required, easily export only a subset of the current configuration, or if needed the importing of a subset of an exported file. As a tab delimited file, it can also be imported into Microsoft Excel.

Configuration Settings

Menu Title	Caption that appears in the Topaz popup menu
Host	Name or IP of the Vantive Server
Port	TCP connection port.
Version	Vantive version
User Name	Login Name
Password	Password
Database	Database (Forms Designer and Tools)
App Path	Directory where the Vantive Application resides
Parameters	Any startup parameters
Actuate Server	Name or IP of the Actuate Report Server
Report Path	Actuate Report Path
Client Title	Caption for Application Window and login screen
App Locale	Application Locale
Inbox Polling	Period, in seconds, between inbox being refreshed
Size	Size and position of the Vantive Window ¹
Dev Mode	Set development mode.
lwDebug Log	Enable the lwDebug log.
OLE Debug Log	Enable the OLE debug log.
Event Trace	Enable the Event trace log.

Platform Requirements

O/S	Windows 95, 98, NT4, 2000, XP ²
Hardware	Min. 32MB / Pentium 100 / 2MB HDD
Exe size	1.1MB

Development Environment

Language	Delphi (Topaz 2 written in Delphi 4)
Current Version	2.4.1 (October 2003)
Price	0\$ (Freeware)
Source Available	NO

Contact

Author	Tony Paterson
E-mail	ajp@cantabrian.co.nz
Web Address	http://www.cantabrian.co.nz/ ³

Topaz was not created by, is not endorsed by, and is not associated with either the Vantive Corporation or PeopleSoft. Some of the product names used herein are trademarks or registered trademarks of their respective holders and are used for identification purposes only. Topaz specifications may change without notice

¹ Window Title may not work for all versions of Vantive Forms Designer

² Resizer Tool does not work on Windows NT4

³ As of October 2003 <http://www.cantabrian.co.nz/> not yet active, hope to have in the near future.